

## Out and About Travel Guide Kyoto

**THE THOUSAND KYOTO**, Opened January 2019

-Personal Comfort Hotel with Kyoto Philosophy-

The Thousand Kyoto offers each guest personalized comfort infused with the wisdom and aesthetic philosophy of Kyoto, the millennial capital. A total of 222 stylish guestrooms, including 8 suites, are equipped with sophisticated interiors inspired by the traditional Kyoto house that are sure to maximize your comfort.

Indulge yourself in a peaceful hideout in Kyoto with a full compliment of our personalized top-level hospitality.



**THOUSAND Ways of LOVE**

-Love begets Love-

Destination Weddings in Style



The Thousand Kyoto offers an authentic and intimate wedding package for couples from around the world. We are honored to be an ally for all couples, regardless of their gender or sexualities, and support *Thousand Ways of Love*. In this package, you will be dressed in a traditional Japanese wedding kimono, and exchanging wedding vows with your loved one at our beautiful *Komorebido* Chapel. Let us help you to create your dream wedding in style!

All Love is Equal

We value the *Love Story* of every couple, and support them all in our constant efforts in making a *Dream Wedding* come true! Kyoto is one of the best destinations in the world for romantic getaways. With the thousands years of history and rich culture, Kyoto offers authentic and memorable experiences that you and your loved ones will remember for a lifetime!

Inquiry: [khres@keihanhotels-resorts.co.jp](mailto:khres@keihanhotels-resorts.co.jp)

## Out and About Travel Guide Kyoto

### Guest Rooms

**-An oasis of comfort and peace, in which to heal mind and body-**

In the best of Zen traditions, adopting a minimalistic design that eliminates anything superfluous with a uniquely Japanese-style low configuration. Abundant greenery and light to behold and beautifully conceived guestroom art delivering a space full of peace and freshness. The amenities and other fittings are also specially selected to typify the wisdom and healing that abound in Kyoto. Each room in our range, from standard rooms onward, reflects the main concept of 'leveraging the abundant wisdom of Kyoto' to embody the Personal Comfort Hotel', with four types of suite room also on offer.

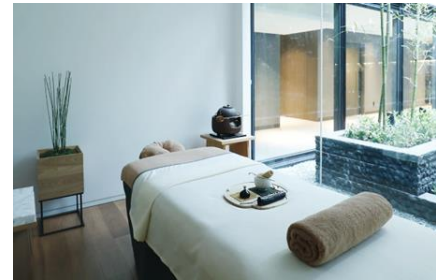


### The Thousand Spa

Themed on meditation, our comfortable spa offers treatments addressing all five senses. Spa users can also enjoy our hot spring bathing and stone spa facilities.

Treatment highlights;

- A spa treatment using the spa brand 'Temae'; made from tea leaves and natural water
- Original body massage using charcoal



### Fitness

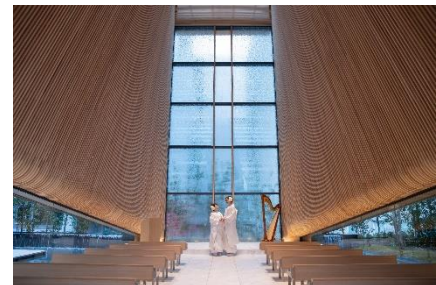
Fitness highlights;

- Staying guests can use our gym facilities free of charge (24 hours)
- A fitness club members' scheme also allowing 'stone spa' access (open to limited number of guests)
- Personal training by request



### Wedding Chapel

A feeling of being enveloped in greenery, while gazing at leaves blowing in the wind and flowing water, within a garden that brings you at one with nature. A standalone independent chapel, set in the heart of verdant and ever-changing nature: 'KOMOREBIDO'. As well as the longed-for chance to leave the urban hustle and bustle behind, we compose wedding options that satisfy each and every guest in full.



## Out and About Travel Guide Kyoto

### Restaurant

Bringing you joy, delight, surprise, new discoveries, the essence of Kyoto and its culture. through each and every dish, encapsulating excitement, its own story, experiences and feelings, we deliver the same to our valued customers. Our dishes offer exceptional quality and ingredients from the world over as well as Kyoto alone, for your delectation.

#### KIZAHASHI

<Enjoy Japanese cuisine in a calm setting with garden views>

For lunch, we cover the whole range, from affordable bento boxes to exquisite kaiseki food courses. At dinnertime, as well as seated course meal options, don't miss our exceptional dessert wagon. Masterfully uniting stillness and motion. We have menus for overseas visitors available and will also do our best to meet any other requests you may have.

**Breakfast:** 7:00-10:00 (Last Order)  
**Lunch:** 11:30-14:30 (Last Order)  
**Dinner:** 17:30-21:00 (Last Order)  
**Seating: 60 Private Room: 3**



#### SCALAE

<Innovative Italian>

This may be a more casual and open-style restaurant, but dishes are every bit as excellent and tasty! Including a range of modern, fusion and innovative choices for an enjoyable and outside-the-box eating experience. Numerous dishes, embodying the chef's contemporary flair, will leave you captivated.

For those taking dinner at the counter, we offer a single special course, combining local Kyoto ingredients with other fine ingredients; specially selected from the world over. Plus, the must-try special Scalae seat, where the chef conjures up a special combination including fusion and molecular elements.

**Breakfast:** 7:00-10:00 (Last Order)  
**Lunch:** 11:30-14:30 (Last Order)  
**Dinner:** 17:30-21:00 (Last Order)  
**Seating: 110 Private Room: 3**



#### TEA and Bar

<A theme celebrating the iconic existence of the 'modern tea party'>

At your choice of time and in your favored style, whether you're sipping a tea or enjoying a glass of sake, a cafe and bar that express and offer a contemporary interpretation of the Kyoto tea culture.



## Out and About Travel Guide Kyoto

### Local Attractions

As a cultural capital of Japan, Kyoto offers 17 UNESCO World Heritage Sites, over 2000 shrines and temples, and many more unique places! Here are just a few examples;

<Vicinity of the Hotel>

#### Kyoto Tower



Standing 131 meters tall just across from Kyoto Station, Kyoto Tower is Kyoto's tallest structure and a rare modern iconic landmark in the city famous for its ancient temples and shrines. The tower was completed in 1964, the same year as the opening of the Shinkansen Bullet train and the Tokyo Olympics.

A viewing platform is located 100 meters above ground and affords a 360 degree view of Kyoto and as far as Osaka on clear days. Kyoto Tower stands on top of a typical commercial building, which contains souvenir shops, restaurants and a hotel, as well as a public bath in the basement.

#### Higashi Honganji Temple and Japanese Garden Shosei-in

Shōsei-en is a garden that belongs to Higashi-Hongan-ji, the big temple of the True Pure Land School of Buddhism just north of Kyoto station. The garden is said to have belonged to the residence of the son of tennō Saga and was built in the early Heian period (794-1185). The pond most likely remained from the original design. The garden we see today, was laid out in 1641 after the shogun Tokugawa donated the land to the Hongan-ji. The garden design was probably realized by the intellectual Ichikawa Jozan and artist, tea master and aristocrat Kobori Enshu.



#### Sanjusangen-do Temple



Buddhist temple in Kyoto built in 1165. It's one of the most popular tourists destinations in Kyoto. The main deity of the temple is the Thousand Armed Kannon. And the main hall of the temple is where countless golden Kannon statues stand. There are 1,001 human-sized statues in total and each of them has slightly different features. It is said that you should find the one similar to you!

#### Kyoto Aquarium

Especially popular with families is Kyoto Aquarium, an aquarium in Umekoji Park that is home to twelve different themed areas exhibiting a variety of aquatic creatures that includes river-living Japanese giant salamanders, fish from the seas of Kyoto, playful seals, popular tropical fish, and spellbinding jellyfish. The Kyoto Aquarium is a staple with locals that makes for a fun afternoon for families, couples, or tourists looking for something to do indoors on a rainy day.



## Out and About Travel Guide Kyoto

### Shopping <Vicinity of the Hotel>

#### JR Kyoto Isetan Department Store

A high-end Japanese department store located inside the Kyoto Station Building. Many major international and domestic brands are represented and you can get English-language assistance by asking at the main information counter. The bulk of the store is dedicated to fashion, clothing and brand goods, but you can also find interior goods (8th floor), sportswear, jewelry and kimonos (9th floor), and stationery and souvenirs (10th floor). On the 11th floor is the Eat Paradise restaurant section and the two basement floors hold bustling food markets.

Hours: 10:00 to 20:00 (Restaurants open longer)



#### Porta Underground Shopping Mall



Kyoto Station extends underground into the Porta shopping mall. The mall is located under the bus terminal and plaza on the Karasuma side of the station and offers roughly 100 shops and restaurants, as well as access to the Karasuma Subway Line.

Hours: 10:00 to 20:30 (until 21:00 on Fridays and Saturdays)

#### Cube Shopping Mall

The Cube is a shopping mall in the basement of the Kyoto Station building. It offers a lot of local souvenirs, such as sweets and pickles on the first basement floor, and fashion and accessories on the second basement floor. Some of the restaurants on the building's 11th floor are also considered part of The Cube.

Shop Hours: 8:30 to 20:00 (B2 fashion shops from 10:00, and until 21:00 on weekends)

Restaurant Hours: 11:00 to 22:00



#### Yodobashi Camera



Kyoto Yodobashi is a large department store located to the immediate north of Kyoto Tower. Four floors of this six story building are occupied by the popular electronics chain store, Yodobashi Camera. The rest of the building contains a variety of shops, restaurants, a café, a bookshop and even a British style pub!

Shop Hours: 9:30 to 21:30 (B2 to 5<sup>th</sup> floor), 11:00 to 23:00 (6<sup>th</sup> floor Dining)

#### Matsui Pharmacy

Established in 1922, they deal with modern medicine, traditional Chinese medicine and cosmetics, etc. Locals love it since it has served the community for a long period. Just 30 seconds walk from the Hotel.

Hours: Mon to Sat 8:00 - 24:00, Sun & Public holiday 10:00 - 21:00

#### Convenience Shops

Family Mart, Lawson Station and Seven Eleven are within a short walk from the Hotel.

**Shops above are all within a few minutes walk from the hotel.  
Please ask our friendly concierge for more details.**

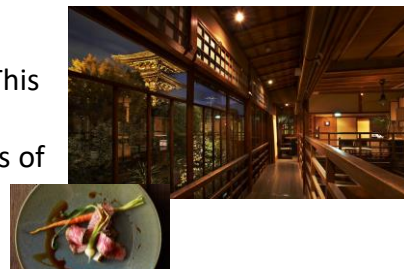
## Out and About Travel Guide Kyoto

### Restaurants

#### **SODO Higashiyama [Italian]** <https://www.thesodoh.com/en/restaurant>

To the east of Yasaka Pagoda, range a very wide area of 4,290 square meters. This area belonged to a very distinguished Japanese artist named Takeuchi Seiho. There, stands a beautiful Japanese-style house and a garden that reflects colors of all four seasons, being the epitome of ancient Higashiyama atmosphere.

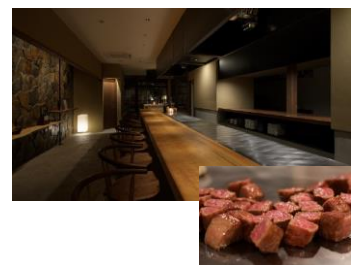
Lunch Mon-Fri 11:30-14:00 Dinner Mon-Sun 17:30-23:00 (L/O 21:00)



#### **Itoh Dining [Teppanyaki Steak]** <https://itoh-dining.co.jp/kyoto/index.html>

A fusion style TEPPANYAKI restaurant nested in a 50-years traditional Japanese house. Please enjoy the scenery of KYOTO while enjoying delicious KOBE BEEF. Seasonal and Special courses and a la carte menus are available.

Lunch 12:00-14:00 (L/O 13:30) Dinner 17:00-22:00 (L/O 21:00)



#### **The Kitchen Salvatore Cuomo Kyoto [Italian]**

<http://www.kitchensalvatore.jp/en/kyoto/index.html>

The scene of chefs cooking in spacious kitchen open to dining area characterizes the lively atmosphere of The Kitchen Salvatore Cuomo, and it spices up your dining experience. Chef Salvatore's dishes arrive to the table very fresh and gorgeous. Enjoy authentic Neapolitan cuisine with local ingredients.

Lunch 11:00-16:00 (L/O 15:00) Dinner 17:00-23:00 (L/O 22:00)



#### **Kokekokko Kyoto [Yakitori]** <http://www.koke-kokko.jp/en/#concept>

Our craftsmen use only the most carefully selected natural ingredients and chicken meat to create a true culinary wonder. The restaurant is a fusion between the elegance of the natural, modern cuisine and the traditional style of Japanese charcoal grilled skewers "Yakitori". It is located at the 10th floor of "Isetan" building of the JR Kyoto Station from where you can enjoy the stunning views of Kyoto Gozan.

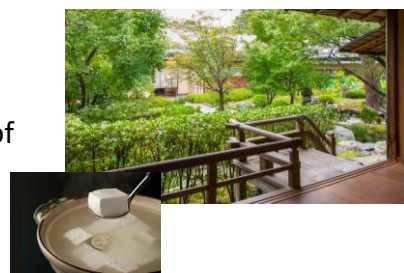
Lunch 11:00-16:30 Dinner 16:00-23:00 (L/O 22:00)



#### **Junsei [Tofu]** <http://www.to-fu.co.jp/en/>

Experience the charming atmosphere of old Kyoto as you dine at Junsei Restaurant, famous for their delicate tofu based dishes presented in a variety of ways. Choose between the Yudofu meal or the Yuba Kaiseki and savor the delicious flavors of the traditional local ingredients.

Hours 11:00-21:30, Daily



## Out and About Travel Guide Kyoto

### Bars and Clubs

#### Club Metro <https://www.metro.ne.jp/>

One of Kyoto's most long-standing night spots, Club Metro draws creative types to its intimate underground music rooms found at the Jingu-Marutamachi metro station. Music aficionados can find their groove amid its eclectic music mix and schedule of international and local DJs. The venue also hosts the occasional film screening and visual arts performance.



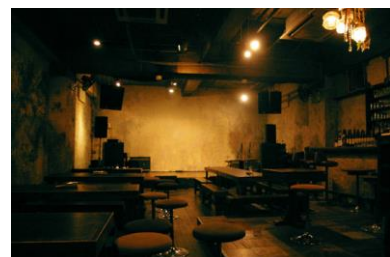
#### Kitsune Kyoto <https://kitsune-kyoto.com/en/>

Opened in 2015, the 800-capacity Kitsune Kyoto boasts a festival atmosphere, a top-notch sound system and dazzling lights, allowing guests to totally immerse in electronic dance music over its two themed floors, 'land' and 'sea'. The weekends often see appearances from big-name artists and celebrity DJs.



#### UrBANGUILD <http://www.urbanguild.net/>

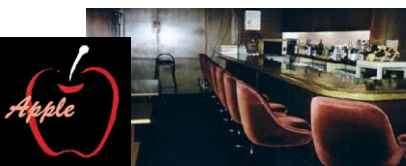
For an authentic Japanese evening, join the city's arty crowd at this avant-grade venue that offers long wooden bench seating, traditional izakaya food and live music that pushes the boundaries of experimentation. Each act brings something new and often obscure, from improvisation to Latin groove, but can always count on the applause of an appreciative audience.



#### Bar LookMe <https://barlookme-kyoto.amebaownd.com/>

Cozy and comfortable, Kyoto's only lesbian bar located in the Kiyamachi bar district. Access to the bar is limited to women only.

Weekdays 19:00-2:00, Saturdays & night before Holidays 19:00-5:00



#### Apple [http://apple1985.web.fc2.com/apl\\_index.html](http://apple1985.web.fc2.com/apl_index.html)

Men-only, foreigner-friendly gay bar in Kyoto. Apple serves wine, beer and a range of alcoholic drinks. There's free karaoke for anyone who wants to sing. Open from 8pm, closed on Mondays.



#### Sake Bumpy! Kyoto <https://twitter.com/BumpySake>

Friendly mix bar (all genders welcome) features premium Sake. Carefully selected 30 different kinds of Sake throughout Japan, and local bar foods are the hidden gem in Kyoto.

Open from 6pm to midnight, closed on Tuesdays